



Personal Computer with integrated 15" display

CPU	Intel® Atom™ N2800 (dual-core/1.86 GHz/ Intel® Hyper-Threading Technology/ 512 KB x 2 L2 cache)										
Chipset	Intel® NM 10 Express Chipset										
RAM Memory	Standard 2GB (up to 4 GB)										
Memory module type	DDR3 800/1066MHz (PC3-6400/PC3-8500)										
Slot	2 x 204-pin SODIMM										
Interfaces I/O	<table border="0"> <tr> <td>Serial</td> <td>2 x RS232</td> </tr> <tr> <td>USB</td> <td>2 x USB 2.0 standard – 2 x USB 2.0 high current</td> </tr> <tr> <td>Audio</td> <td>1 x Mic-in / 1 x Line-out</td> </tr> <tr> <td>LAN</td> <td>1 x RJ45</td> </tr> <tr> <td>Video OUT</td> <td>1 x HDMI 1 x VGA</td> </tr> </table>	Serial	2 x RS232	USB	2 x USB 2.0 standard – 2 x USB 2.0 high current	Audio	1 x Mic-in / 1 x Line-out	LAN	1 x RJ45	Video OUT	1 x HDMI 1 x VGA
Serial	2 x RS232										
USB	2 x USB 2.0 standard – 2 x USB 2.0 high current										
Audio	1 x Mic-in / 1 x Line-out										
LAN	1 x RJ45										
Video OUT	1 x HDMI 1 x VGA										
HD Controller	Controller on M/B										
	2 x Serial ATA 2.0 3Gb/s										
Storage											
	HDD/ODD 1 x HDD 2.5" SATA – standard 250 GB										
Graphic system	Integrated audio board High Definition Audio (2 Channels)										
Network system	Network board Intel® 82574L 10/100/1000 Mb/s Ethernet Controller										
LCD display	15.0" TFT										
	Pixel Pitch 0.297mm x 0.297mm										
	Number of colours 16.7M										
	Angle Horizontal: 160° Vertical: 160°										
	Brightness 250 cd/sqm										
	Contrast 600:1										
	Response time <8ms										
	Suggested resolution 1024 x 768										
	Touchscreen Optional										
	Panel /Controller 5 resistive wires / USB										
Battery runtime	6/8 hrs										

Keyboard

Keyboard Measures	Sanitize Medical board mm 390x150x15h
--------------------------	--

Battery

Battery	"Panasonic" Lithium – Ions battery-21,7Ah
Battery life	1000 cycles
Full charging time	5.0 hrs
Charging status indicators	Power status display on LED on computer side
Input voltage	198-264 VAC
Output voltage	9~30 V. DC – DC Converter
Weight	20kg

- Available also LEAD-GEL Battery

prolite PC trolley

Prolite PC trolley connects clinicians with real-time information at the point of care. Prolite PC trolley perfectly integrates the traditional system of storage and technology: giving immediate access to electronic medical records, allowing dosage checking and availability of drugs needed, streamlining the nurse workflow and making the medication management process more efficient.



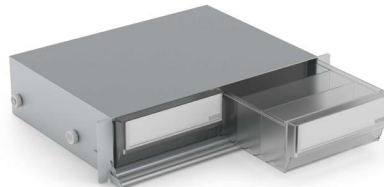
PLM400PCA – prolite Medical Computer Trolley

- Cart size: mm 635x645x1045 h
- Lightweight Aluminum construction
- Baydur® Polyurethane top, base and drawers
- Work area with slide-out work surface
- Top front keyboard retractable tray
- Seamless lightweight drawers: 1 of mm 105 h, 2 of 150 h and 1 of mm 210 h
- Bottom compartment mm 105 h, for battery storage, easy-to-reach for charging operations (rear)
- Selection of convenience accessories and options
- Articulated arm and computer bracket mounted on pole
- Trim-line footprint castors mm 125, for simple maneuverability
- Integrated PC , display 15"
- Keyboard certified for medical environment
- Li-Ion Battery (6/8hrs runtime)

Accessories



Medication Cassette
4 Medium patient bins



Medication Cassette
2 Large patient bins



Wastebasket with lid,
knee opening



Cup dispenser